

Bible Doctrines (T/G/B)

Theology

Eschatology
Thanatology
Ecclesiology
Israelology
Dispensationalism
Doxology
Hodology
Soteriology
Hamartiology
Natural Law
Anthropology
Angelology
Pneumatology
Christology
Paterology
Trinitarianism
Cosmology
Theology Proper
Bibliology
Natural Theology

Foundations/Reality

7 Hermeneutics 41
-Natural Law-44
6 Science 51
5 Language 155
4 Epistemology 32
Existence 50
History 50
3 Metaphysics 32
Trans. 50
2 Reality
- Logic, 32
- Truth, 32
1 Realism – 32

Romans 13: Government, Natural Law, and Love (3)

Opening: 2 Tim. 3:16-4:8; Psalm 73:23-26

- A. Life with God by proper knowledge and proper love—by knowing and by loving,** Matt 22:37-40; 1 John 4:10, 16; 2 Pet 2:1-4; 1 Cor 13; 1 Cor 16.22; 1 Cor 2:9; Rom 12:17-13:14.
- B. Growing in the Word of God: Eph. 5:1-14.**
1. Hermeneutics (41): The Dasein: Objectivity vs. Perspectivalism.
 2. Through the Bible: Eph 5:1-14.
- C. Advancing in Bible Doctrine: Apprehending our Incomprehensible God-4.**
1. The Bible teaches that the LORD and His ways are incomprehensible (Exod. 3:13-14; Psa 139:6; 145:3; Job 5:9; 9:10; 11:7; 36:26; Isa. 40:28; Rom. 11:33-12:2).
 2. 6 Principles on God-talk.

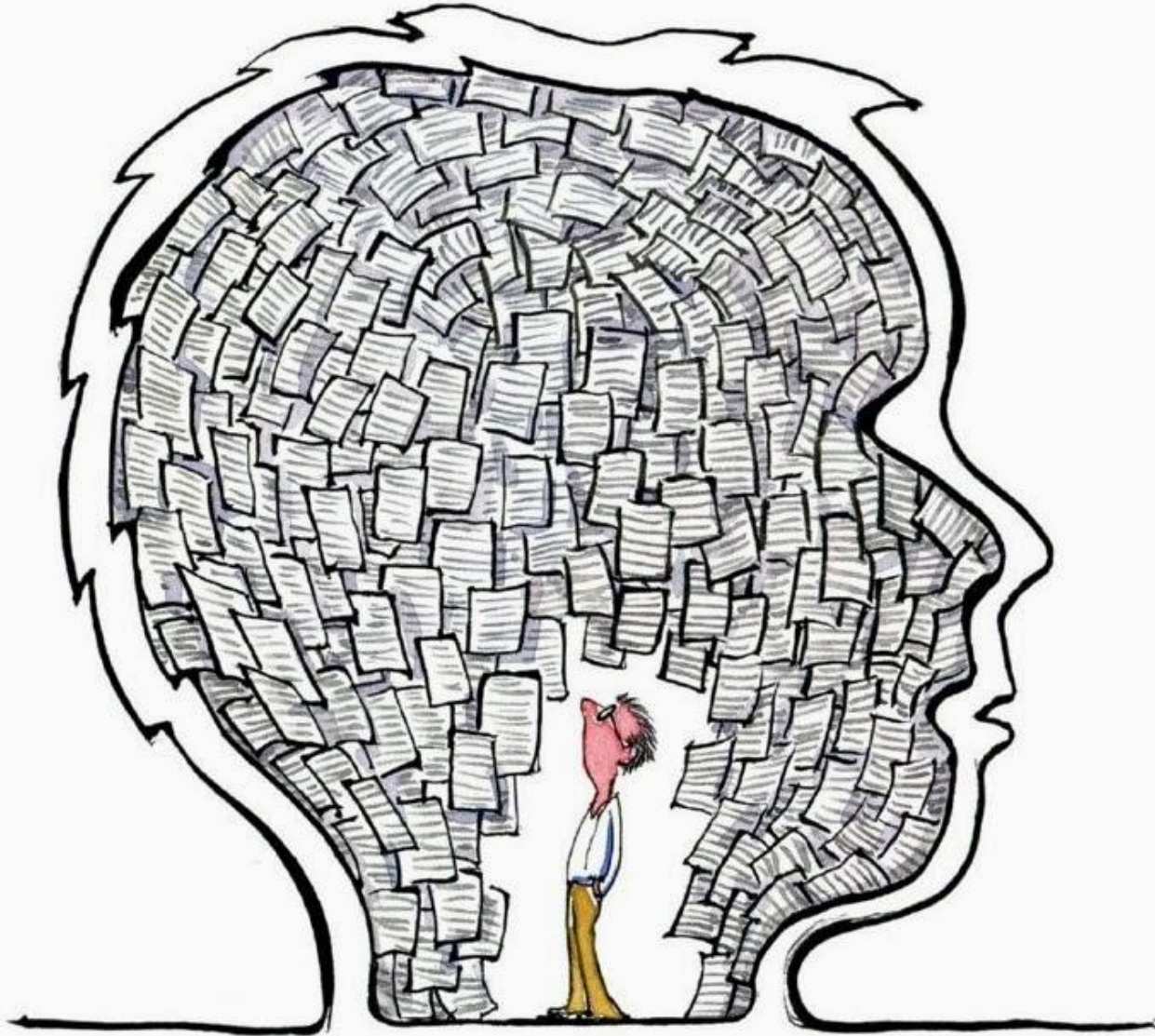
<http://www.fbcweb.org/sermons.html>

4-11-18

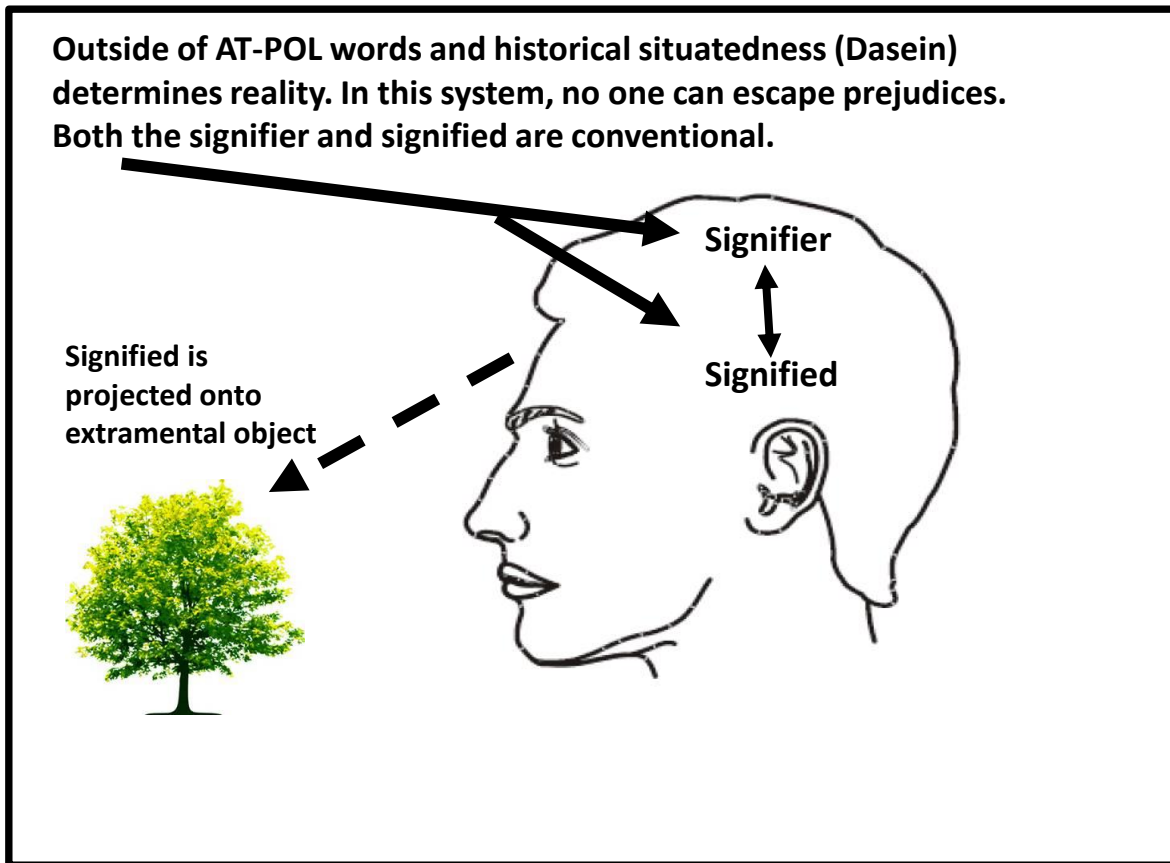
Our universe is either filled with (1) bodies extended in space or (2) form/matter. Since Rene Descartes and Immanuel Kant, virtually everyone lives in (1). The results is that all hope of gaining correspondence truth has been abandoned.



All forms of idealism begins with the Mind. One cannot be Realist is one starts with the mind, with thoughts, ideas, and concepts. We either clothe beings with words or cloth words with beings.



In all systems outside of AT-POL, signs (words, culture, representations, emotional makeup, preferences = Dasein) precede and determine reality



Aristotelean/Thomistic Realism = knowing is a metaphysical event of directly connecting to the metaphysical structure of reality (laws of being and reason) rather than just a self-direct rational process. Perception precedes and determines language.

Note that knowledge of reality is pre-linguistic. Knowledge precedes language

